

“

***I***

”

”

in

n

u

A

1 2 3

RAA

RA

acids

T

BT

ic

So

no





ENT

EN

How!

RIGHT

TS

H

ro

no

0

B

0 1 2 3

RE

Q









**NO**

**WE**

ONN

111

111

YK!

MNU!

**ACI**

**ST**

**ST**

**B**





AN

MTI

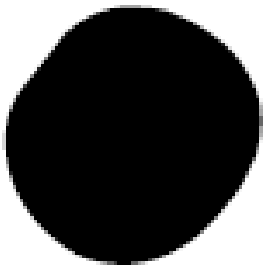
—

R

R

**ACI**

1517



- A

**NGE**



LA S

Y.

.

Q

**DAVIE**

6